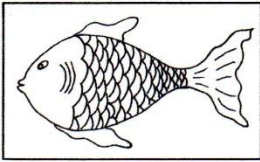
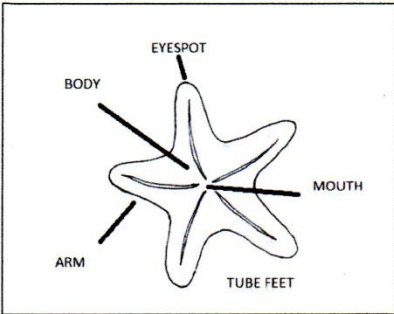


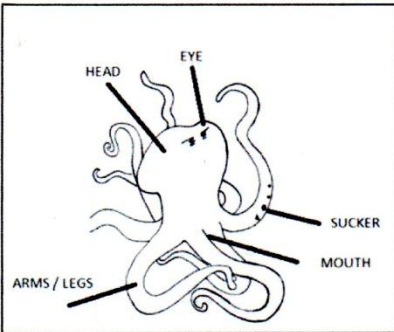
Activity 7 –  
Attachment 1:  
Animals body parts and features



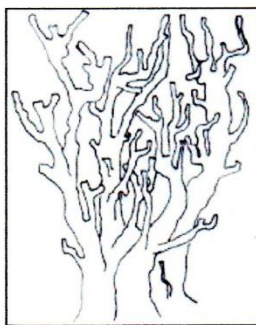
THIS IS A FISH.  
IT IS A VERTEBRATE.  
IT HAS FINS, SCALES, GILLS, EYES AND A MOUTH AND A TAIL.  
IT CAN BREATHE AIR AND IT CAN SWIM IN GROUPS.



THIS IS A STAR FISH (OR SEA STAR).  
IT IS QUITE LARGE.  
IT IS AN INVERTEBRATE.  
IT HAS GOT ARMS.  
IT CAN CATCH SMALL FISH.



THIS IS A OCTOPUS.  
IT IS INVERTEBRATE.  
IT IS INTELLIGENT.  
IT IS A PREDATOR.  
IT HAS GOT FOUR PAIRS OF ARMS , A BEAK AND A MOUTH-  
IT CAN EJECT INK.



- GROUP OF CORALLS
- INVERTEBRATES
- TENTACLES
- VERY SMALL
- MOUTH
- LIVE IN CLEAR WATER

• THIS IS A .....

.....

• IT IS .....

.....

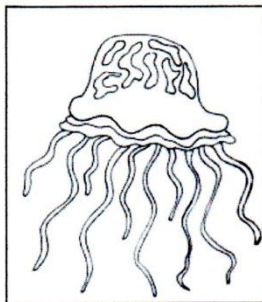
• IT HAS GOT .....

.....

• IT CAN

.....

.....



- JELLYFISH (OR SEA JELLY)
- INVERTEBRATE
- UMBRELLA SHAPED
- LARGE
- SOFT BODY
- CAPTURE PREY

• THIS IS A .....

.....

• IT IS .....

.....

• IT HAS GOT .....

.....

• IT CAN

.....

.....